



NEWS UPDATE JUNE 1ST-5TH

Upcoming Events

- June 3rd-Kinder/Gr.1 Botanic Gardens
- June 3rd-Gr. 3 Telus World of Sciences
- June 4th-Gr. 6 ELAL Part B PAT
- June 5th-District Track Meet
- June 9th-Spirit Day-Formal Wear Day
- June 11th-Gr. 6 Social PAT
- June 12th-Gr. 6 Science PAT
- June 12th-Gr. 2 Royal Alberta Museum
- June 12th-Gr. 4 Fort Edmonton
- June 12th-TEPA Movie Night
- June 15th-Gr. 6 Math PAT-Part A
- June 18th-Gr. 6 Math PAT-Part B
- June 19th-Last Day for Pre-K
- June 19th-Gr. 5 to Rundle Misson
- June 23rd-Kinder Grad 9:30am
- June 24th-Last Day of Classes

Friendly Reminders

Phone: 780-789-3776

- Doors open at 8:10 am for drop-off; please do not leave your children unsupervised
- Any changes to end-of-day instructions for your children need to be reported to the office before 2:45 pm.
- School Drop-off and Pick-up **DO NOT** use Staff Parking, **do not block driveways** and be considerate of other drivers.
- Do not use bus lane between (8:00-8:30, 2:30-3:15)
- Birthday Treats: Our school guideline is that treats must be commercially produced to ensure safety and lessen contamination.



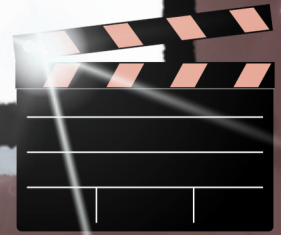
Exciting Breakfast Program Enhancements at TES!



Smoothies

Monday June 8th : 8:10–8:30 AM

MOVIE NIGHT



YOU'RE INVITED TO A MOVIE NIGHT! COME RELAX AND ENJOY A MOVIE WITH US.

JOIN US FOR A COZY MOVIE NIGHT! POPCORN, COMFY BLANKETS, AND GREAT COMPANY GUARANTEED.

FRIDAY
JUNE 12TH
6:00

POPCORN
\$2.00

\$5 A
PERSON OR
\$20 A
FAMILY

DON'T MISS OUT!
WE ARE VIEWING "GOAT"

THORSBY ELEMENTARY SCHOOL GYM





GRADES 6-9

**END OF YEAR
DANCE**

JUNE 12!

DJ NO REQUESTZ

**THORSBY
JR HIGH SCHOOL**

**TICKETS \$10 | DANCE IS 7-10:30 PM
CONCESSION WILL BE OPEN!
BURGERS! POPCORN!
SNACKS AND
MORE!**



THORSBY ELEMENTARY SCHOOL
STAFF 2026-2027



OFFICE STAFF:

MRS. COLES
MRS. DOBKO

LIBRARIAN:

MRS. DOBKO

PRE-K:
KINDERGARTEN:

MR. YAREMKO
MS. OLSEN

GRADE 1:

MRS. CONRAD

GRADE 2:

MRS. WALKER

GRADE 3:

MRS. NEUFELD

GRADE 3/4:

MISS. ZADDEREY

GRADE 4:

MRS. LEFEBVRE

GRADE 5:

TBD

GRADE 5/6:

MRS. MACGREGOR

GRADE 6:

MR. WARREN

MUSIC:

MRS. SCHMIDT

WELLNESS:

MS. OLSEN

AP/LST

MRS. SCHMIDT

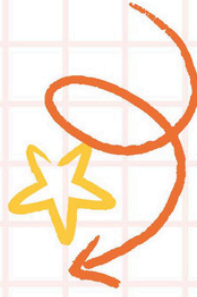
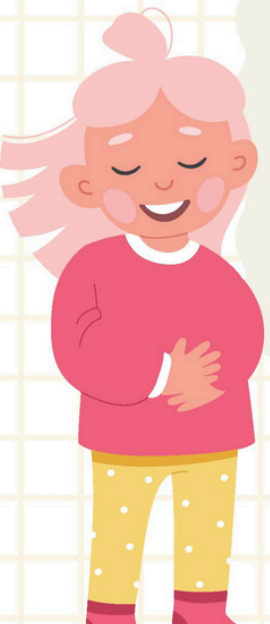
PRINCIPAL:

MRS. RUSSETT

EDUCATIONAL ASSISTANTS

MR. NICK
MRS. DOBKO-PRIMUS
MRS. RHODY

MRS. CHUBOCHA
MRS. MCLELLAN
MRS. CYGAN
MRS. HALLIDAY



Black Gold School Division Preschool

When little learners
need a little more -
we're here



Black Gold School Division Preschool

When little learners
need a little more -
we're here



FREE preschool development screening

CREATING HOPE SOCIETY PRESENTS

AN INVITATION TO CONNECT

9 session - Connect Parenting Program



Alberta
Provincial Family
Resource Networks



Connect Parenting is an
Attachment Based and Trauma
Informed Program for Parents
and Caregivers

What You'll Gain:

Understanding Attachment
Confidence in Connecting with your Child
Working Through Conflict

OFFERED ONLINE!

 **April 28 - June 3, 2026**  **10:30am - 12:00pm**

To Register: Contact Camillia or Cynthia at
587-590-4247

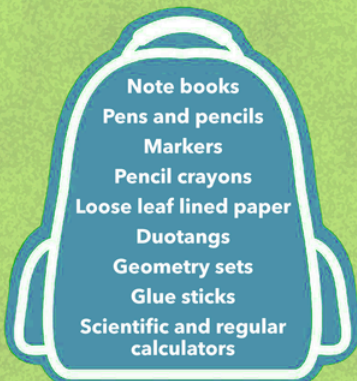
or

shcw.leduc@creatinghopesociety.ca / shcw.central@creatinghopesociety.ca

Tools FOR School

HIGH NEED ITEMS

*Please ensure all supplies donated are new or unused



Tools for School provides
backpacks filled with
school supplies for students
in Kindergarten through Grade 12
for families needing support

If your child needs a backpack,
contact the Leduc & District
Food Bank to register:

780-986-5333
Director@ldfb.ca

For donations,
Leduc Food Bank collection boxes
are located in local grocery stores:



or donate online: www.ldfb.ca

Helping children thrive with routines

Does your child struggle to complete everyday activities like getting ready for bed, shifting from playtime to another activity, or leaving the house? Do you want to create an environment that helps them build new skills and grow their independence?

If so, join this session to learn:

- why routines are good for your child and the whole family
- how to create routines
- ideas to handle common challenges

We will be joining AHS to offer this webinar intended for parents and caregivers who have children 1 to 10 years old. It's also suitable for parents and caregivers of children with developmental delays and autistic or neurodivergent children. Snacks will be provided.

- ▶ **Date:** Tuesday, June 16, 2026
- ▶ **Time:** 6:30 to 8 p.m.
- ▶ **Location:** Warburg Town Office (backdoor) - 5212 50 Ave., Warburg
- ▶ **Registration:** [Online, Leduc-County.com/helping-children-thrive](https://www.leduc-county.com/helping-children-thrive) or email Loretta@Leduc-County.com



Family drop-in

Thorsby

Leduc County Family Resource Network

Our Family Resource Network hosts weekly family drop-in programs offering a variety of activities, tools and resources to support childhood development. Get more information at www.leduc-county.com/frn

- ▶ Resources
- ▶ Referral
- ▶ Coffee
- ▶ Snacks
- ▶ Crafts
- ▶ Games
- ▶ Wifi
- ▶ Computer use
- ▶ Programs
- ▶ Supports
- ▶ Kid Kits
- ▶ Much more

Drop in location

Thorsby: 4711 48 Ave.
In the modular building across from Arctic Spas Recreation Complex

Tuesdays from 2 to 8 p.m.
Thursdays from 9 a.m. to 4 p.m.

All families welcome!



Family Resource Network
leduc-county.com
780-979-2385 | frn@leduc-county.com

AGES AND STAGES DEVELOPMENTAL CHECK IN

Online

Have you ever wondered about your child's development? The Ages and Stages Questionnaire provides a fast and helpful look at how your child is doing in important areas like communication, social skills, motor skills and problem solving skills. Screening can identify your child's strengths, uncover new milestones to celebrate and reveal any areas where your child may need support. It helps you understand your child's development and know what to look for next.

The ASQ and ASQ:SE questionnaires are designed to help you monitor your child's development at regular intervals from 2 months to 5 years of age. To access these questionnaires, go to our website below.

www.leduc-county.com/en/living-here/early-learning-and-care.aspx

For more information, please call 780-979-2385 or email frn@leduc-county.com.



Black Gold Early Intervention Pre-Kindergarten



Our Early Intervention Pre-Kindergarten program intake is now open!

Do you have a preschooler who faces challenges like...

- following directions
- communication issues
- anxiety
- developmental delays

If yes - then early intervention is crucial.

Don't wait for things to get harder—take action now to give your child the best start to their education career. Invest their future success by applying for a screening to find out if your child can qualify for our Early Intervention Pre-Kindergarten (EI-PreK) program!

Space is limited, sign up today!

For more information, contact Early Childhood Services Coordinator **Rebecca Aiken** at rebecca.aiken@blackgold.ca
www.blackgold.ca/programs/pre-kindergarten





KIDSPORT LEDUC & COUNTY

We provide financial support to help cover the costs of registration fees so that all kids aged 18 and under in Leduc & Leduc County can play a season of sport.

Our recently expanded chapter, administers grants of up to \$350 per child/year, (\$750 if they qualify for the Hockey Assist Program), for athletes living in Beaumont, Calmar, Devon, Leduc, Leduc County, Millet, New Serapta, Thorsby, Warburg, or Wetaskiwin.



So ALL Kids Can Play! **Contact**
780 405 5264