



## NEWS UPDATE MAY 11TH-15TH

### Upcoming Events

- May 11th-TES Track and Field Day
- May 12th-14th-No PreK Classes
- May 15th-PD Day No Classes
- May 18th-Victoria Day (School Closed)
- May 19th-No Pre-K Classes
- May 20th-Kindergarten Open House (3:30-5:00)
- May 21st-High Jump Grand Prix
- May 27th-29th-Camp Warwa Gr. 6's
- May 29th-Spirit Day-Western Wear

Transportation registration for the 2026-27 school year is open!

Early birds who register by June 30th:

- Save money through early bird discounts
- Guarantee a spot on the bus on the first day of school

To register:

<https://www.blackgold.ca/apply-for-transportation-Black-Gold-Students>

Learn more about early bird savings:

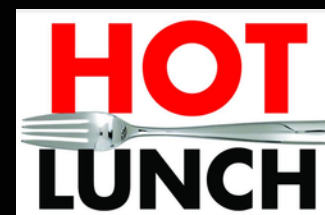
<https://www.blackgold.ca/transportation-fees-and-info>

### Friendly Reminders

Phone: 780-789-3776

- Doors open at 8:10 am for drop-off; please do not leave your children unsupervised
- Any changes to end-of-day instructions for your children need to be reported to the office before 2:45 pm.
- School Drop-off and Pick-up **DO NOT** use Staff Parking, **do not block driveways** and be considerate of other drivers.
- Do not use bus lane between (8:00-8:30, 2:30-3:15)
- Birthday Treats: Our school guideline is that treats must be commercially produced to ensure safety and lessen contamination.

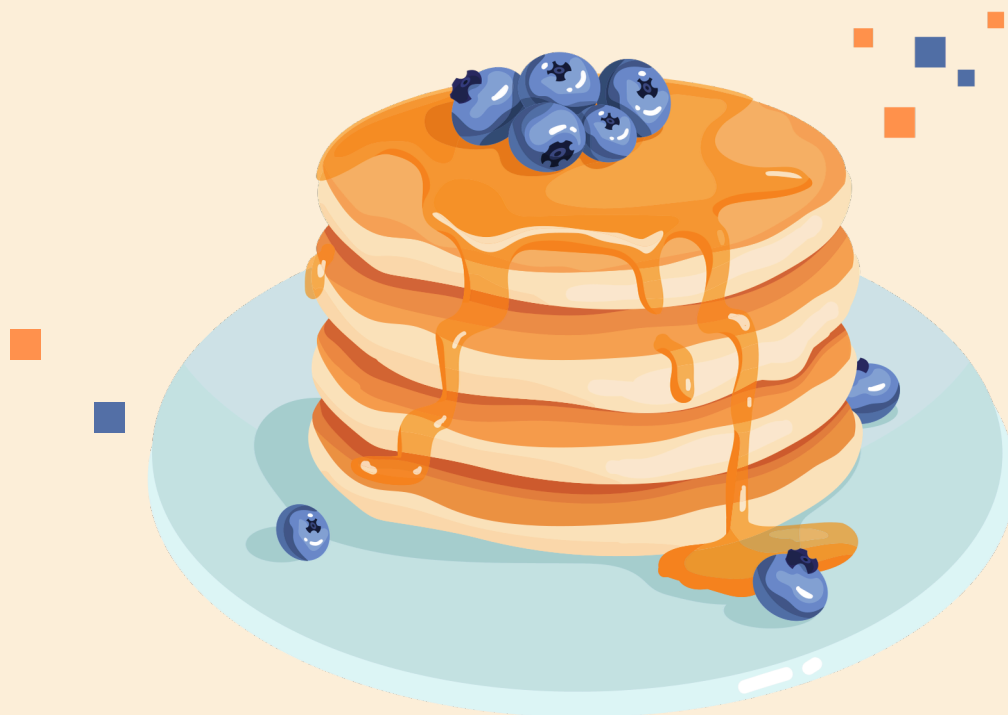
**Orders for June  
Due. May 20th**



Hot Lunch Order Link

JOIN US FOR

# PANCAKE BREAKFAST!



THORSBY JR SR HIGH SCHOOL

MAY 14th

7:30 - 9:30 am

**\$2.00 (suggested donation)**

all kids can eat with or without donation

**ALL PROCEEDS GO BACK TO THE SCHOOL**

# Education & Mental Health Week

## Family Mental Health Night



## Chris Scheetz - Small Town Big Dreams Presentation



## A visit with Ivy



# Bike Safety Rodeo

SAT, MAY 23, 2026  
Bike Safety Rodeo & Community BBQ

10AM - 12 NOON  
Leduc RCMP Detachment  
4119 50 Street, Leduc

SUN, MAY 24, 2026

Festivus of Gravel Kids Races  
10:30AM - 12 NOON  
Telford Lake, North of Lede Fields  
4313 48 Ave, Leduc



5 BIKES TO GIVE AWAY!  
WIN YOUR FIRST SET OF WHEELS COURTESY OF DK FORD

Register Here:

THANK YOU TO OUR EVENT SPONSORS



IN PARTNERSHIP WITH



Leduc





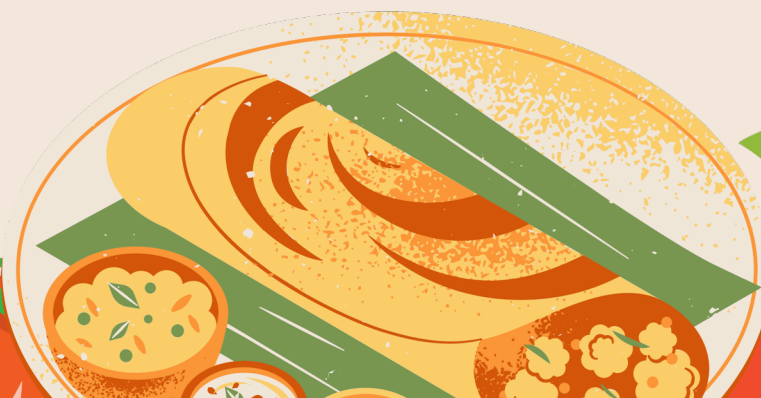
SCHOOL WIDE  
HOT LUNCH  
MAY 20<sup>TH</sup>

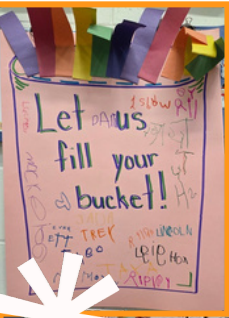
**Donated by Lions  
Campground and TEPA**

What's on the menu?

Ham, mashed potatoes, gravy,  
corn, buns & an ice cream cup.

If you have any dietary  
restrictions please reach out to  
[julie\\_beeep@hotmail.com](mailto:julie_beeep@hotmail.com)






# KINDY OPEN HOUSE 2026

**Thorsby Elementary School**  
**Our Program:**

- Learn about our NEW half-day program and how we can support your child
- Explore our classroom and see how we inspire creativity and play based learning
- Ask questions in a safe environment
- Meet our dedicated and nurturing educators

 **WEDNESDAY, MAY 20, 2026**

 **From 3:30-5:00 pm**

 **Thorsby Elementary Kindergarten Room**

 [www.tes.blackgold.ca](http://www.tes.blackgold.ca)

 **780-789-3776**



Black Gold School Division Preschool

When little learners  
need a little more -  
we're here



Black Gold School Division Preschool

When little learners  
need a little more -  
we're here



FREE preschool development screening

CREATING HOPE SOCIETY PRESENTS

# AN INVITATION TO CONNECT

9 session - Connect Parenting Program



Alberta  
Provincial Family  
Resource Networks



Connect Parenting is an  
Attachment Based and Trauma  
Informed Program for Parents  
and Caregivers

### What You'll Gain:

Understanding Attachment  
Confidence in Connecting with your Child  
Working Through Conflict

**OFFERED ONLINE!**

 **April 28 - June 3, 2026**  **10:30am - 12:00pm**

To Register: Contact Camillia or Cynthia at  
587-590-4247

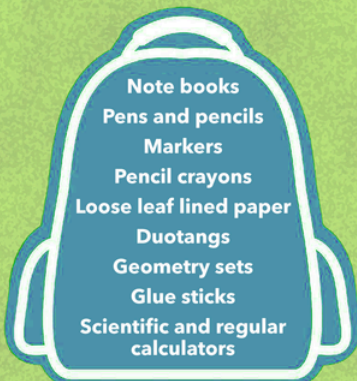
or

[shcw.leduc@creatinghopesociety.ca](mailto:shcw.leduc@creatinghopesociety.ca) / [shcw.central@creatinghopesociety.ca](mailto:shcw.central@creatinghopesociety.ca)

# Tools FOR School

## HIGH NEED ITEMS

\*Please ensure all supplies donated are new or unused



Tools for School provides  
backpacks filled with  
school supplies for students  
in Kindergarten through Grade 12  
for families needing support

If your child needs a backpack,  
contact the Leduc & District  
Food Bank to register:

780-986-5333  
Director@ldfb.ca

For donations,  
Leduc Food Bank collection boxes  
are located in local grocery stores:



or donate online: [www.ldfb.ca](http://www.ldfb.ca)

# AGES AND STAGES DEVELOPMENTAL CHECK IN

*Online*

Have you ever wondered about your child's development? The Ages and Stages Questionnaire provides a fast and helpful look at how your child is doing in important areas like communication, social skills, motor skills and problem solving skills. Screening can identify your child's strengths, uncover new milestones to celebrate and reveal any areas where your child may need support. It helps you understand your child's development and know what to look for next.

The ASQ and ASQ:SE questionnaires are designed to help you monitor your child's development at regular intervals from 2 months to 5 years of age. To access these questionnaires, go to our website below.

[www.leduc-county.com/en/living-here/early-learning-and-care.aspx](http://www.leduc-county.com/en/living-here/early-learning-and-care.aspx)

For more information, please call 780-979-2385 or email [frn@leduc-county.com](mailto:frn@leduc-county.com).



Leduc County | City of Beaumont | Town of Calmar | Town of Devon | Town of Thorsby | Village of Warburg

## Family drop-in

Thorsby

Leduc County Family Resource Network



Our Family Resource Network hosts weekly family drop-in programs offering a variety of activities, tools and resources to support childhood development. Get more information at [www.leduc-county.com/frn](http://www.leduc-county.com/frn)

- ▶ Resources
- ▶ Crafts
- ▶ Programs
- ▶ Referral
- ▶ Games
- ▶ Supports
- ▶ Coffee
- ▶ Wifi
- ▶ Kid Kits
- ▶ Snacks
- ▶ Computer use
- ▶ Much more

### Drop in location

**Thorsby:** 4711 48 Ave.  
 In the modular building across from  
 Arctic Spas Recreation Complex

**Tuesdays** from 2 to 8 p.m.  
**Thursdays** from 9 a.m. to 4 p.m.

*All families welcome!*

# Black Gold Early Intervention Pre-Kindergarten



## Our Early Intervention Pre-Kindergarten program intake is now open!

Do you have a preschooler who faces challenges like...

- following directions
- communication issues
- anxiety
- developmental delays

If yes - then early intervention is crucial.

Don't wait for things to get harder—take action now to give your child the best start to their education career. Invest their future success by applying for a screening to find out if your child can qualify for our Early Intervention Pre-Kindergarten (EI-PreK) program!

**Space is limited, sign up today!**

For more information, contact Early Childhood Services Coordinator **Rebecca Aiken** at [rebecca.aiken@blackgold.ca](mailto:rebecca.aiken@blackgold.ca)  
[www.blackgold.ca/programs/pre-kindergarten](http://www.blackgold.ca/programs/pre-kindergarten)



# PLAY ON!

## WE'LL HELP WITH THE SPORT REGISTRATION FEES.

Alberta

**EVERY KID  
CAN PLAY**

A GOVERNMENT OF ALBERTA PROGRAM  
POWERED BY KIDSPORT



Your child could be eligible for a grant up to \$250 to help cover sport registration fees! Find out more at [kidsportcanada.ca/alberta/leduc-and-county](https://kidsportcanada.ca/alberta/leduc-and-county)